

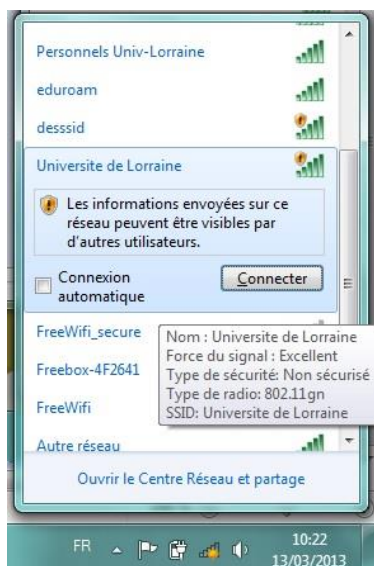


Wifi connection for student :  
« Université de Lorraine »

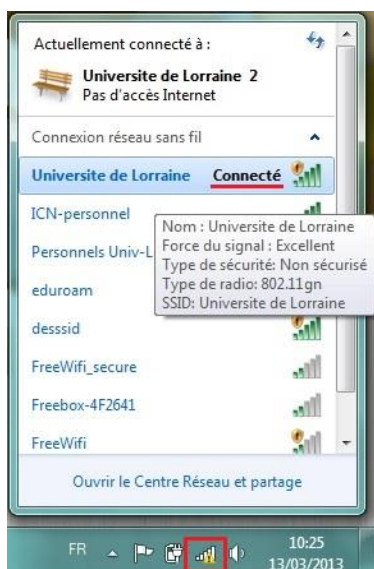
---

**IT Service**

## I. Open the list of available wifi networks.



Connect to the Wi-Fi “Universite de Lorraine”

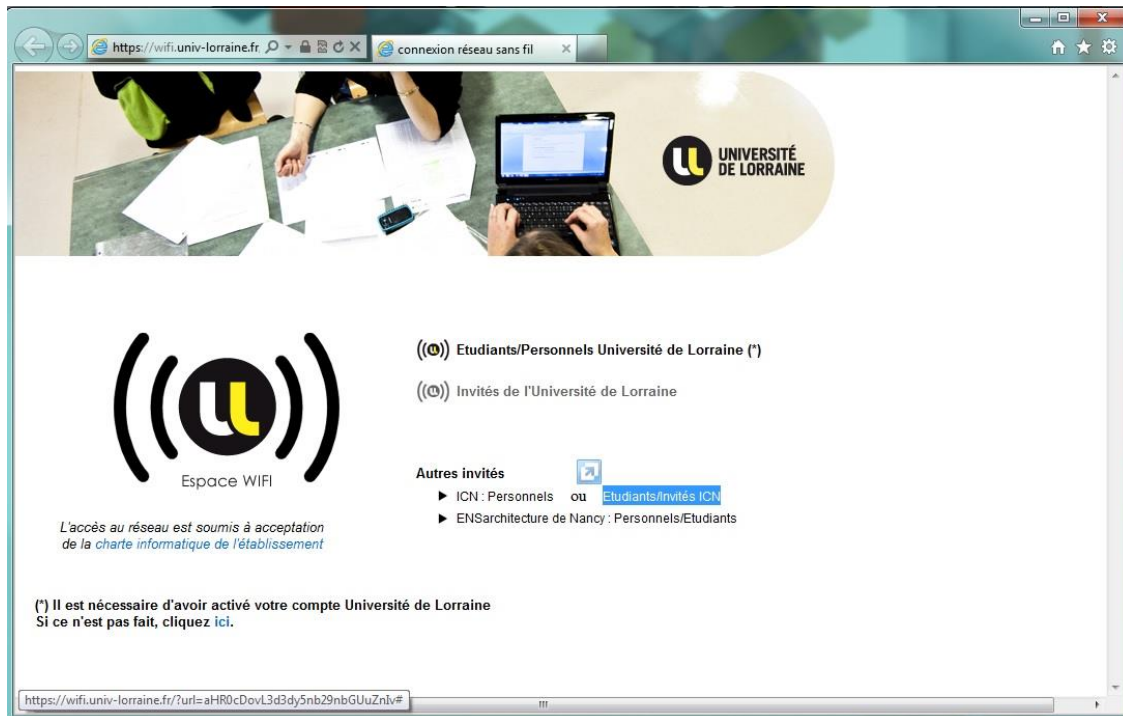


You are now connected to the network.

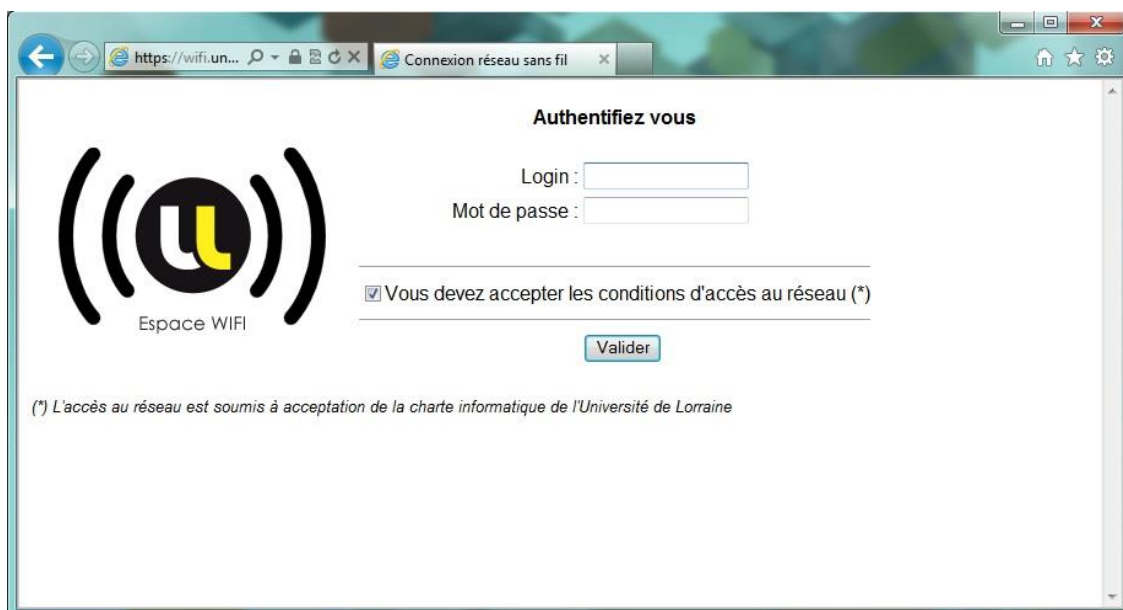
But you must identify yourself in order to use the internet.

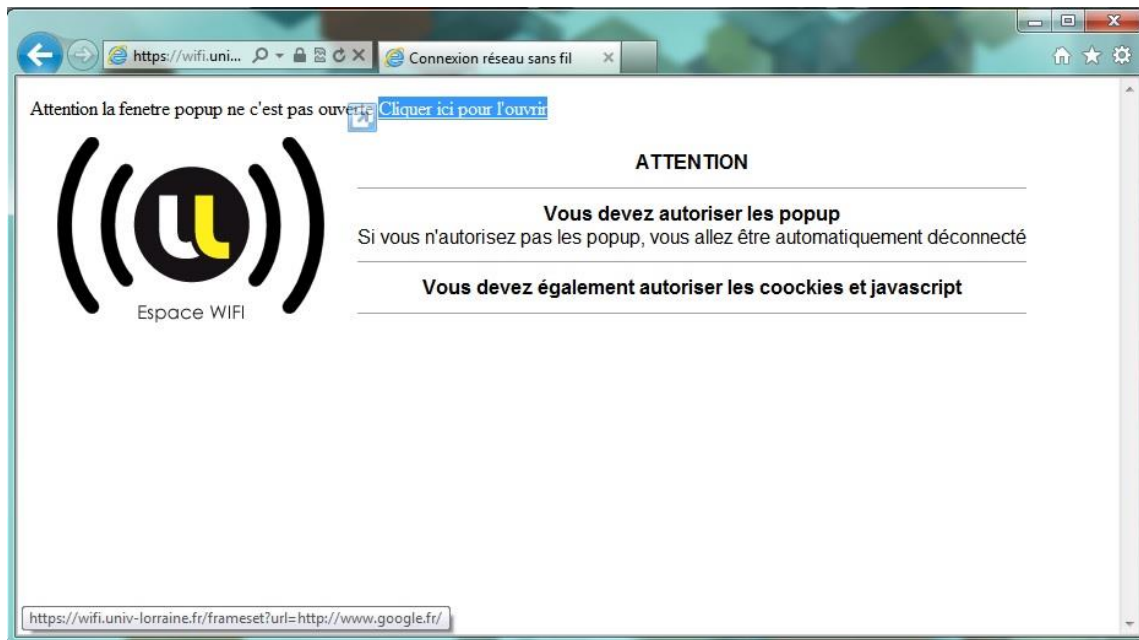
- II. In order to identify yourself, you must open a browser (Internet Explorer, Google Chrome, Firefox, Edge...) and try to access any website that start by http (https will not work).

Then click on the link « Etudiants/Invités ICN »

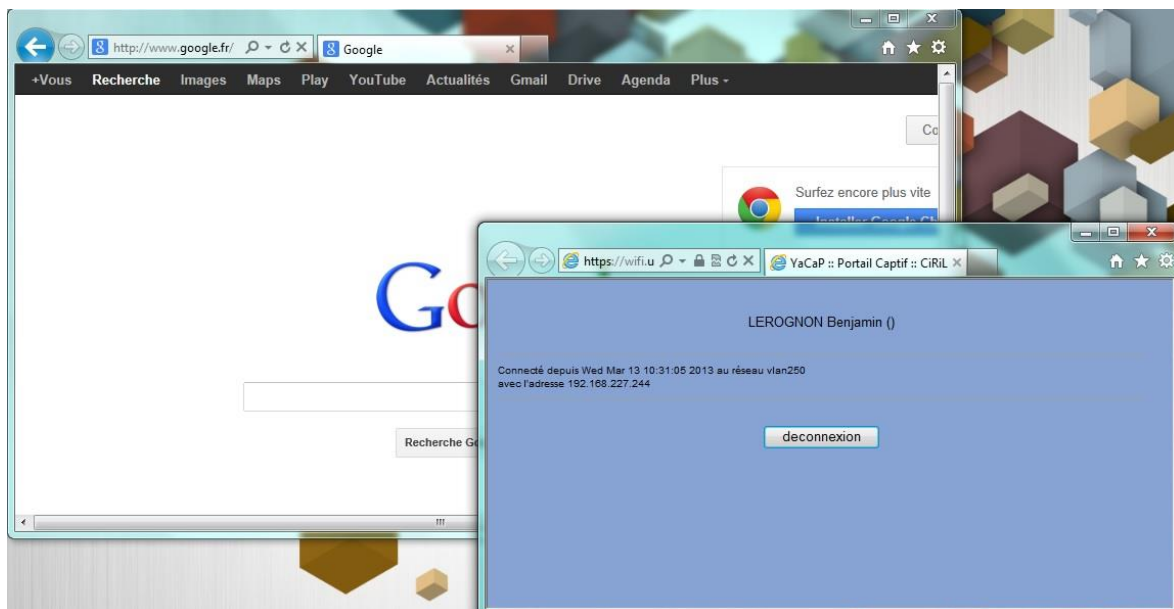


Enter your credentials and submit



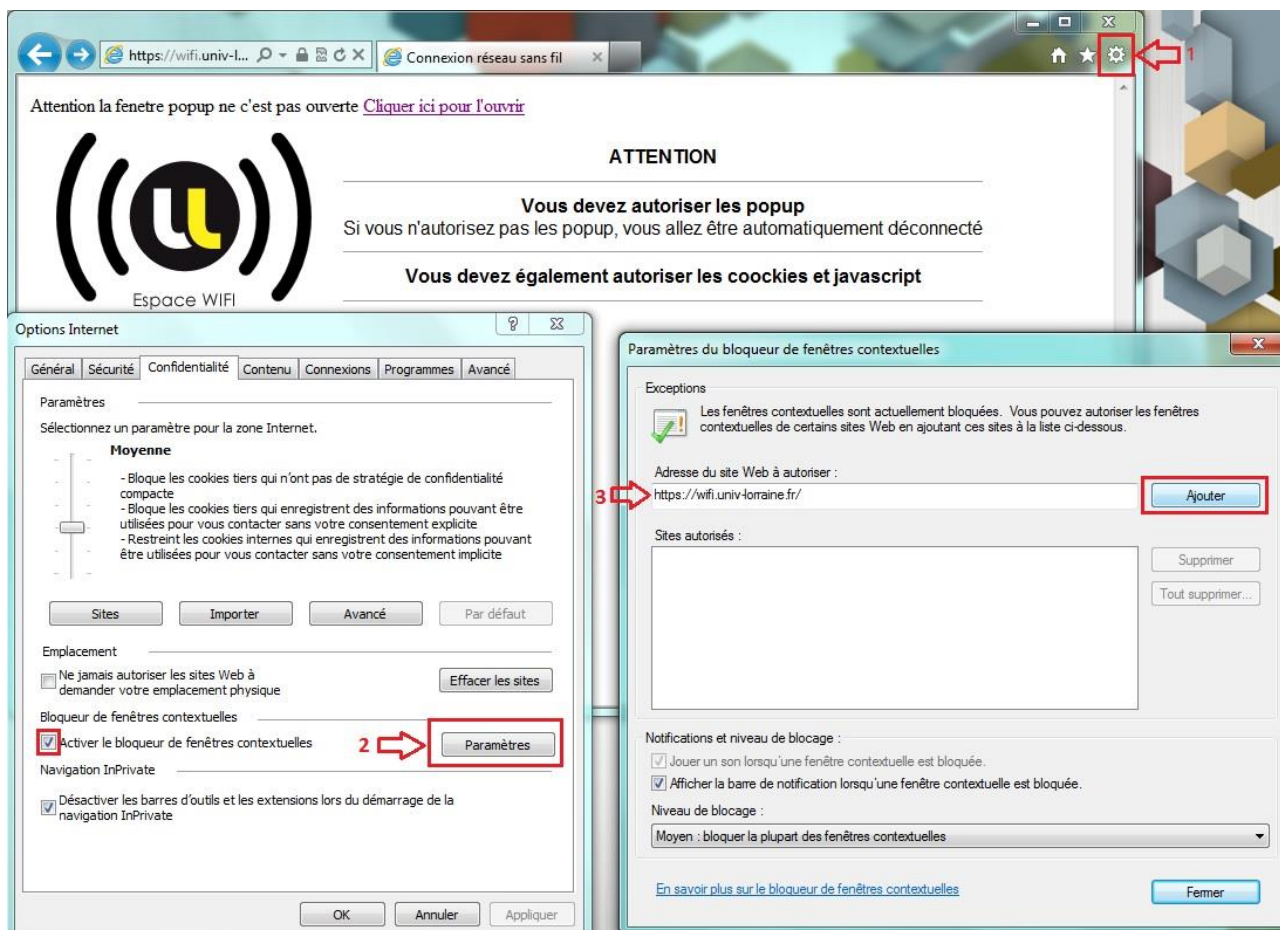


Click on the link « click here to open » to open the blue window pop up.



**You have to keep that blue window open to keep the connection alive.**

### III. Any troubles to open the blue window popup? Follow these steps :



1. Click on internet explorer settings, then internet settings.
2. If popup blocker is enable, open settings (or you can also disable popup blocker, that means you can avoid step 3)
3. Then add the following url « <https://wifi.univ-lorraine.fr/> »